

**Rockaway Park Former Manufactured Gas Plant (MGP) Site
Rockaway Park, Queens County, New York**

April 17, 2009 Field Change Request: FCR-03

Decontamination Procedures

On behalf of National Grid US, Paulus, Sokolowski and Sartor Engineering, PC (PS&SPC) has prepared this Field Change Request# 3 (FCR-03) to address the planned decontamination procedures at the Rockaway Park Former MGP Site (Site).

PS&SPC and National Grid's remediation contractor, Posillico Environmental, Inc. (Posillico) have prepared the following clarification to decontamination procedures identified in Section 3.1, Site Preparation, and Section 3.9, Decontamination, of the November 2008 100 percent Remedial Design Report (RDR). Specifically, this FCR-03 addresses the following personnel, heavy construction equipment and over-the-road dump trucks (dump truck) decontamination procedures. An overview of the Site decontamination areas is identified on the attached Field Sketch SK-4 (refer to Attachment A).

DUMP TRUCK LOAD OUT AND DECONTAMINATION PROCEDURES

- Dump trucks will enter the Site from the Beach 108th Street access gate and sign in at the Site Security Trailer. Dump trucks will then proceed to the Truck Liner Station and the dump truck tarp is inspected periodically. The truck bed liner (truck liner) is installed by the remediation contractor in the bed of the dump truck. The dump truck will then proceed to the excavation area and will be loaded with excavated materials.
- Gross decontamination of the dump trucks will be performed inside the temporary fabric enclosure (tent). The trucks will be loaded and the load will be completely foamed prior to gross decontamination; where contaminated soil and debris will be removed with a hand tools and coarse brushes prior to exiting the tent.
- Dump trucks will then proceed to the Tarping Station located outside of the tent. The truck liner will be folded over the foamed load and the truck tarp tension bar will be engaged over the load with the tarp secured along the outside edge of the truck bed.
- Dump truck will proceed to the nearest Decontamination Pad and Tire Wash Station; where the dump truck will be decontaminated with high-pressure water sprays or low pressure hoses. The Decontamination Pad and Tire Wash Station will be constructed, operated and maintained outside of the tent in the identified Contamination Reduction Zone (CRZ). The Decontamination Pad(s) have been and will be constructed in accordance with the RDR specified construction methods (refer to Sections 3.1.1 and 3.9).
- After decontamination, the dump truck will proceed through the final on-site inspection point where the truck will be inspected, the disposal manifest will be signed by the truck driver and the on-site National Grid agent, the truck driver will then sign out at the security gate prior to departure from the Site, and then the dump truck will exit the Site.

- Decontamination materials will be managed and disposed off-site in accordance with applicable regulations and as specified in the RDR.

HEAVY CONSTRUCTION EQUIPMENT DECONTAMINATION PROCEDURES

- Gross decontamination of the heavy construction equipment will be performed inside the temporary fabric enclosure (tent); where contaminated soil and debris will be removed with a hand tool and coarse brushes prior to exiting the tent.
- Heavy construction equipment will proceed to the nearest Decontamination Pad; where the heavy construction equipment will be decontaminated.
- Decontamination activities will include the removal of contaminated soil, debris and other miscellaneous materials from the heavy construction equipment and tools using a combination of high-pressure water sprays, low pressure hoses and detergent washing. In addition, physical or mechanical agitation of soil with hand tools will be utilized to minimize wastewater generation.
- Decontamination materials will be managed and disposed off-site in accordance with applicable regulations and as specified in the RDR.

PERSONNEL DECONTAMINATION PROCEDURES

- Gross decontamination (coarse brushing) of Site personnel will be performed inside the tent.
- Personnel decontamination will occur inside the Decontamination Shelter that will be operated in the CRZ located adjacent to the entrance/exit of the tent.
- Decontamination materials will be managed and disposed off-site in accordance with applicable regulations and as specified in the RDR.

SHALLOW EXCAVATION AREA TEMPORARY STEEL SHEETING DECONTAMINATION PROCEDURES

Posillico will perform temporary steel sheeting decontamination in accordance with the March 16, 2009 New York State Department of Environmental Conservation (NYSDEC) approved Shallow Excavation Program (refer to Attachment B).

FCR-03 CONCLUSIONS

Two Decontamination Pads and the Decontamination Shelter locations will be relocated as the remedial activities progress across the Site. One Decontamination Pad will be operated in the general vicinity of the tent. Decontamination Pads and the Decontamination Shelter will be relocated to minimize the CRZ footprint area, minimize the dump truck, equipment and personnel travel time to the decontamination area, and further minimize Site impacts.

Sections 3.1.1 and 3.9 of the RDR stated that decontamination will occur in a controlled manner inside the tent. This statement is incorrect; Posillico will remove gross contamination inside the tent; however dump truck, heavy construction equipment and personnel decontamination will be performed in the CRZ located outside of the tent. The remedial design intent of the RDR will be achieved with these revised decontamination procedures.

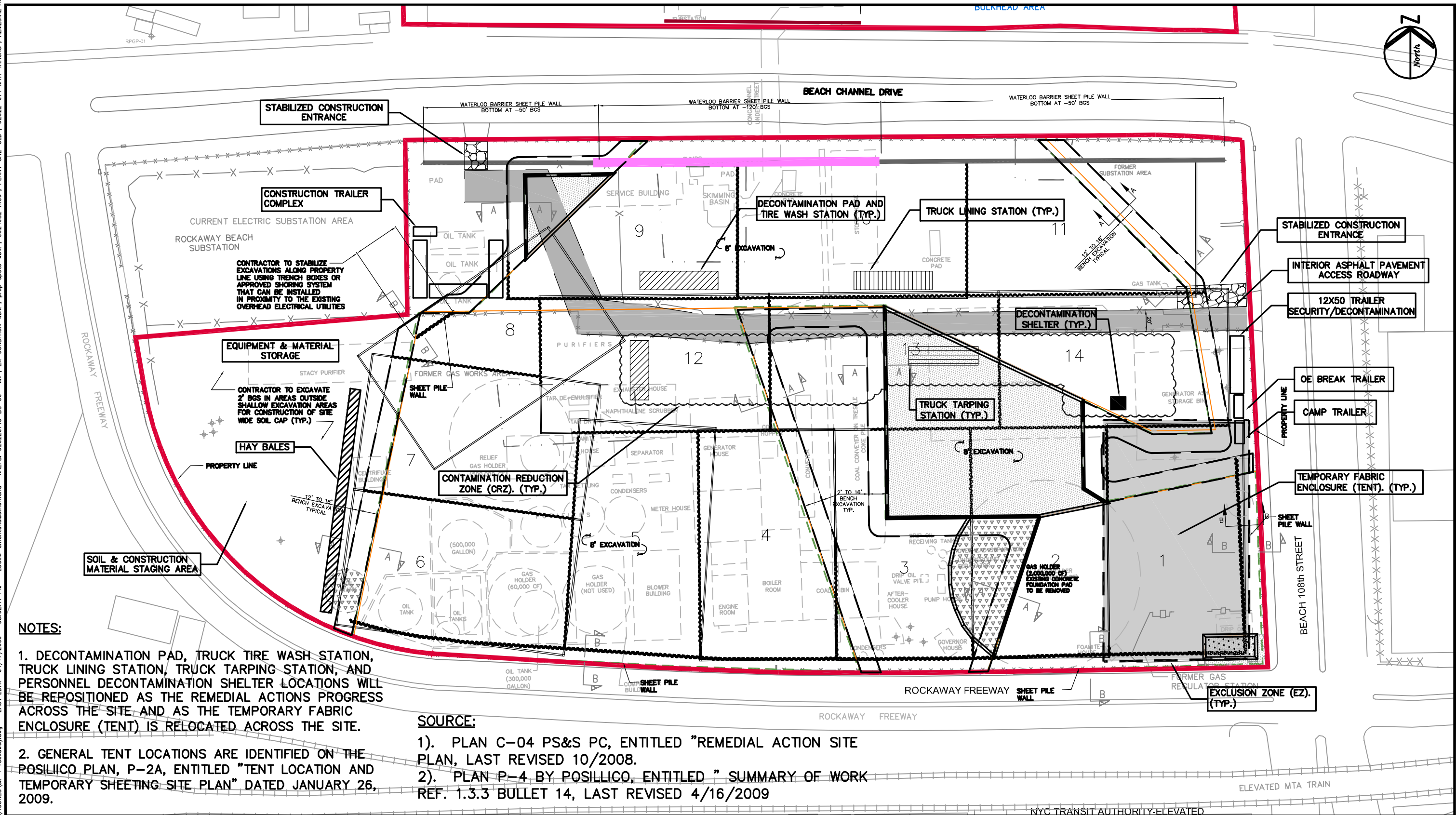


Paulus, Sokolowski and Sartor Engineering, PC
67A Mountain Boulevard Extension
P.O. Box 4039
Warren, New Jersey 07059
Tel: 732-560-9700 Fax: 732-560-9768

Attachment A

Field Sketch SK-4, Site Operations Plan

FILE NAME: P:\02522\014\Drawings\FIGURES\sk-4-rockaway.dwg LAST EDIT: 04/17/2009 - 03:02:17 PM LOGIN: amontana@montana XREFS: 02522014C-B5-00--WN : EX-CONDITION-wbk ; prop-spots-wbk ; 0624952-mod ; PLANT-SITE-OLD : 02522-014-MTA-TRACKS ; REMEDIAL ACTION PLAN ;

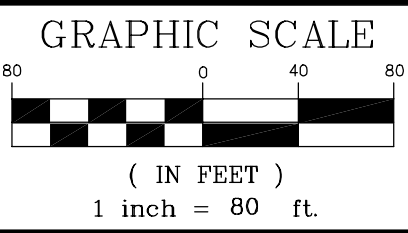


NOTES:

1. DECONTAMINATION PAD, TRUCK TIRE WASH STATION, TRUCK LINING STATION, TRUCK TARPING STATION, AND PERSONNEL DECONTAMINATION SHELTER LOCATIONS WILL BE REPOSITIONED AS THE REMEDIAL ACTIONS PROGRESS ACROSS THE SITE, AND AS THE TEMPORARY FABRIC ENCLOSURE (TENT) IS RELOCATED ACROSS THE SITE.
2. GENERAL TENT LOCATIONS ARE IDENTIFIED ON THE POSILICO PLAN, P-2A, ENTITLED "TENT LOCATION AND TEMPORARY SHEETING SITE PLAN" DATED JANUARY 26, 2009.

SOURCE:

- 1). PLAN C-04 PS&S PC, ENTITLED "REMEDIAL ACTION SITE PLAN, LAST REVISED 10/2008.
- 2). PLAN P-4 BY POSILICO, ENTITLED " SUMMARY OF WORK REF. 1.3.3 BULLET 14, LAST REVISED 4/16/2009



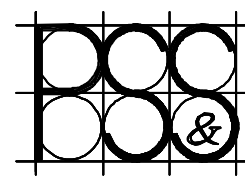
ALL DIMENSIONS MUST BE VERIFIED BY THE CONTRACTOR. NOTIFY PAULUS, SOKOLOWSKI AND SARTOR, LLC. OF ANY CONFLICTS, ERRORS, AMBIGUITIES OR DISCREPANCIES IN THE CONTRACT DRAWINGS OR SPECIFICATIONS BEFORE PROCEEDING WITH CONSTRUCTION.

ALL DIMENSIONS SHALL BE AS NOTED IN WORDS OR NUMBERS ON THE CONTRACT DRAWINGS. DO NOT SCALE THE DRAWINGS TO DETERMINE DIMENSIONS.

THESE CONTRACT DRAWINGS CONTAIN DATA INTENDED SPECIFICALLY FOR THE NOTED PROJECT AND CLIENT. THEY ARE NOT INTENDED FOR USE ON EXTENSIONS OF THIS PROJECT OR FOR REUSE ON ANY OTHER PROJECT.

THE COPYING AND/OR MODIFICATION OF THIS DOCUMENT OR ANY PORTION THEREOF WITHOUT THE WRITTEN PERMISSION OF PAULUS, SOKOLOWSKI, AND SARTOR, LLC. IS PROHIBITED.

COPYRIGHT RESERVED. PAULUS, SOKOLOWSKI, AND SARTOR, LLC. - ALL RIGHTS RESERVED.



PAULUS
SOKOLOWSKI and
SARTOR Engineering, PC
Engineers • Architects
Environmental Scientists

PROJECT TITLE
NATIONAL GRID US
ROCKAWAY PARK
FORMER MGP SITE

SHEET TITLE
GENERAL SITE
OPERATIONS PLAN

DATE: 04-15-09
SCALE: 1" = 80'
DRN. BY: AM
CK'D BY: ARC
PROJ. NO.: 2522-014
SHT. NO.: SK-4



Paulus, Sokolowski and Sartor Engineering, PC
67A Mountain Boulevard Extension
P.O. Box 4039
Warren, New Jersey 07059
Tel: 732-560-9700 Fax: 732-560-9768

Attachment B

Shallow Excavation Program Decontamination Procedures

**Rockaway Park Former Manufactured Gas Plant (MGP) Site
Rockaway Park, Queens County, New York**

Shallow Excavation Program Decontamination Procedures

Prior to backfill placement in the eight foot below grade surface (bgs) Shallow Excavation Area, the Remediation Contractor will remove gross source material contamination observed on the exposed face of the temporary steel sheeting above the groundwater table using a combination of hand tools and power washers. Therefore, the top eight feet of the temporary steel sheeting will be decontaminated prior to extraction from the ground. In addition, during the extraction of the temporary steel sheeting, gross contamination will be manually removed using a combination of hand tools and power washers.

After in-place gross contamination removal procedures, the Remediation Contractor plans to backfill approximately six feet of the Shallow Excavation with imported clean fill materials. Temporary steel sheeting will then be extracted through the six feet of backfill prior to the installation of the two foot thick Site Wide Cap. After the extraction of the temporary steel sheeting, resulting gross source material contamination of the backfill observed at the surface of the Site Wide Cap subgrade will be excavated. The two foot thick Site Wide Cap will then be constructed above the subgrade where the temporary steel sheeting was removed.

After extraction and prior to re-driving the temporary sheeting, the Remediation Contractor will cover as necessary the decontaminated temporary sheeting with plastic as part of the on-site staging and Shallow Excavation Area procedures. At the completion of the Shallow Excavation Area effort and prior to demobilization from the Site, a final decontamination of the temporary sheets, remedial equipment and tools will be conducted that includes the removal of contaminated soil, debris and other miscellaneous materials using a combination of high-pressure water sprays, detergent wash and rinse with low pressure hoses.